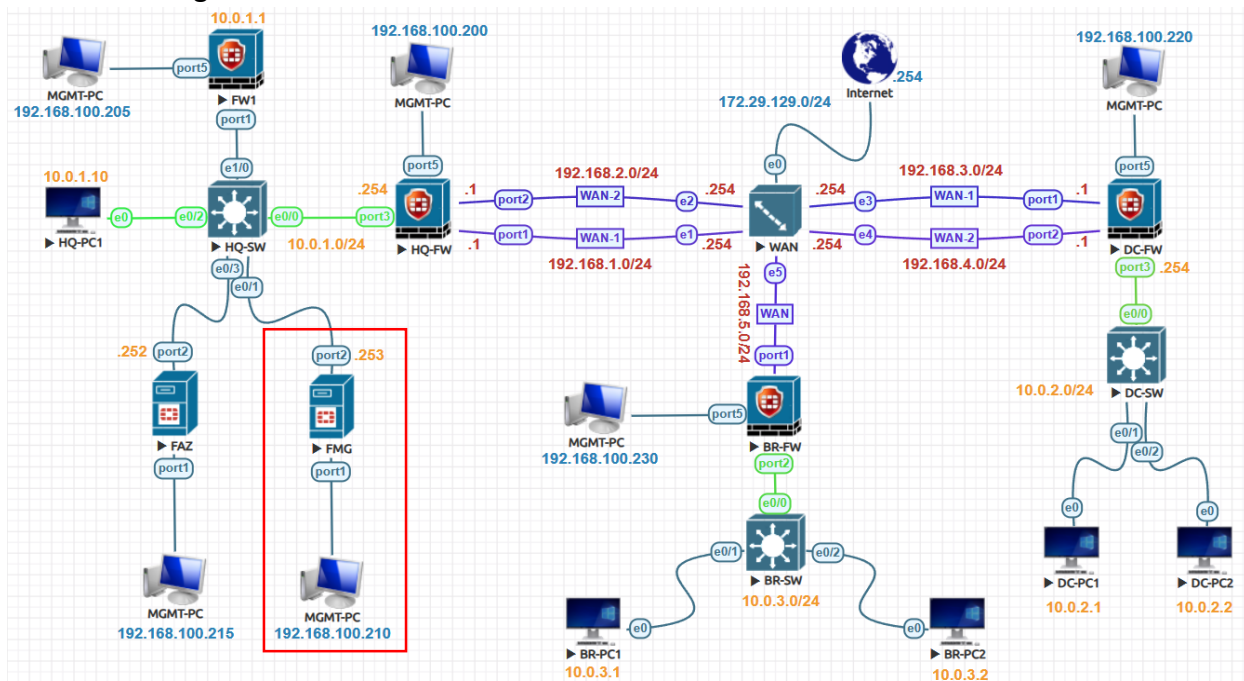


FMG ADOM Configuration Lab:

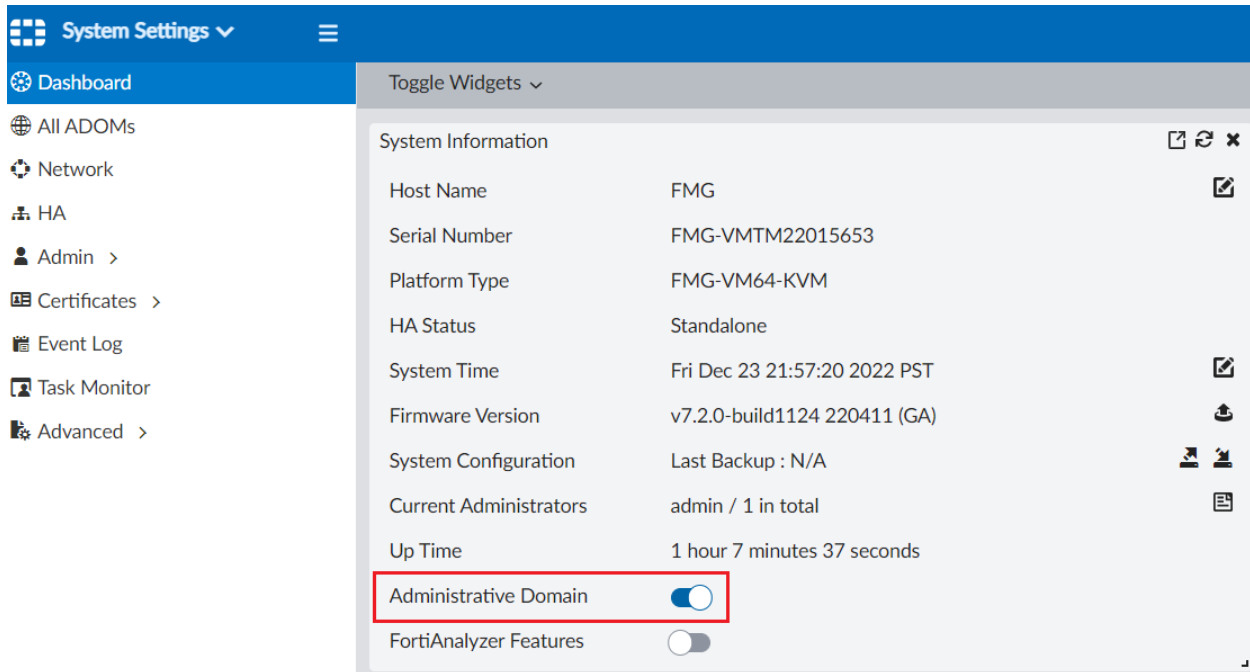
ADOMs must be enabled, and you must be logged in as a super user administrator to create a new ADOM. Select the version of the devices in the ADOM. The ADOM version cannot be edited. Select **Normal Mode** if you want to manage and configure the connected devices from the FortiManager GUI.



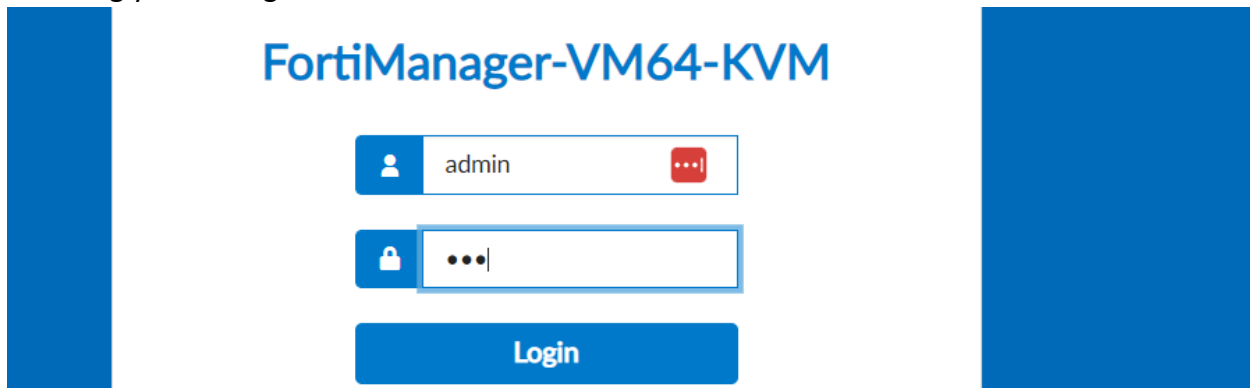
| | |
|-----------------------|-------------------------------|
| Internal Port | Port2 |
| Management Port | Port1 |
| Management IP Address | 192.168.100.210 |
| Internal IP Address | 10.0.1.253 |
| Gateway | 10.0.1.254 |
| FortiManager Hostname | FMG |
| FortiManager Version | FMG_VM64_KVM-v7.2.0-build1124 |
| MGMT-PC | Management Cloud0 |
| ADOM Mode | Normal ADOM |
| ADOM Name | FG-7-0-9 |
| Administrator | Admin |

Enable ADOM:

To enable ADOMs, Go to **System Settings>Dashboard**. In the **System Information** widget, go to Administrative Domain, and **toggle On**.

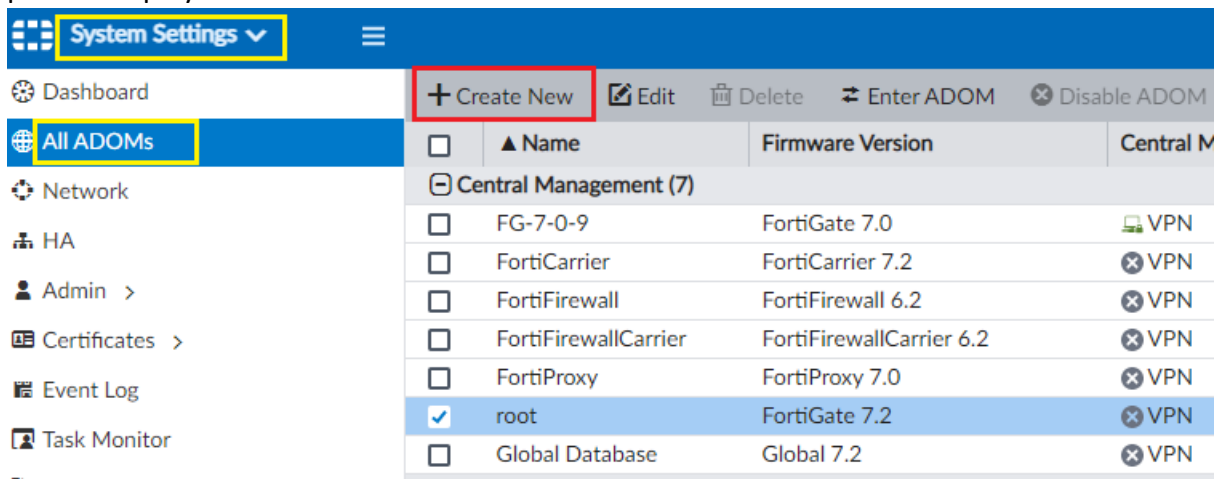


It will log you out login back.



Create Normal ADOMs:

Go to **System Settings > All ADOMs**. Click **Create New** in the toolbar. The Create New ADOM pane is displayed.



Configure the following settings, then click **OK** to create the ADOM. Type a name that allows you to distinguish this ADOM from your other ADOMs. Select the type FortiGate. Select the version of the devices in the ADOM. Select **Normal** mode. Select the **VPN** checkbox to enable central VPN management. If you want unchecked FortiAP and FortiSwitch.

Create ADOM

Name:

Type: 6.4 **7.0** 7.2

Description:

Devices

+ Select Device Column Settings

| <input type="checkbox"/> | Name | IP Address | Platform |
|--------------------------|------|------------|----------|
| No record found. | | | |

Mode: ☒ Normal ☐ Backup

Central Management: ☒ **VPN** ☒ FortiAP ☒ FortiSwitch

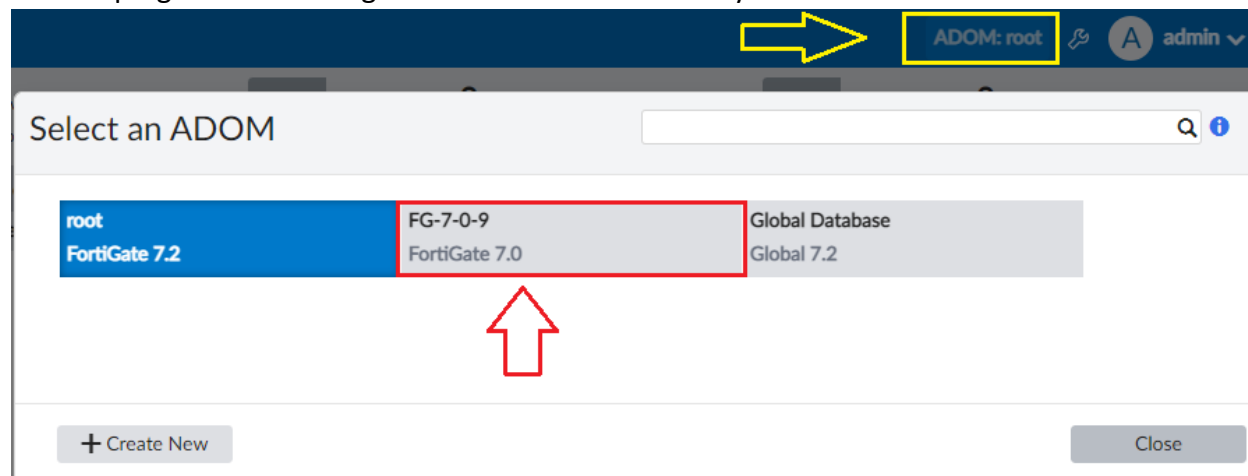
Default Device Selection for Install: ☒ Select All ☐ Deselect All

Perform Policy Check Before Every Install: ☐

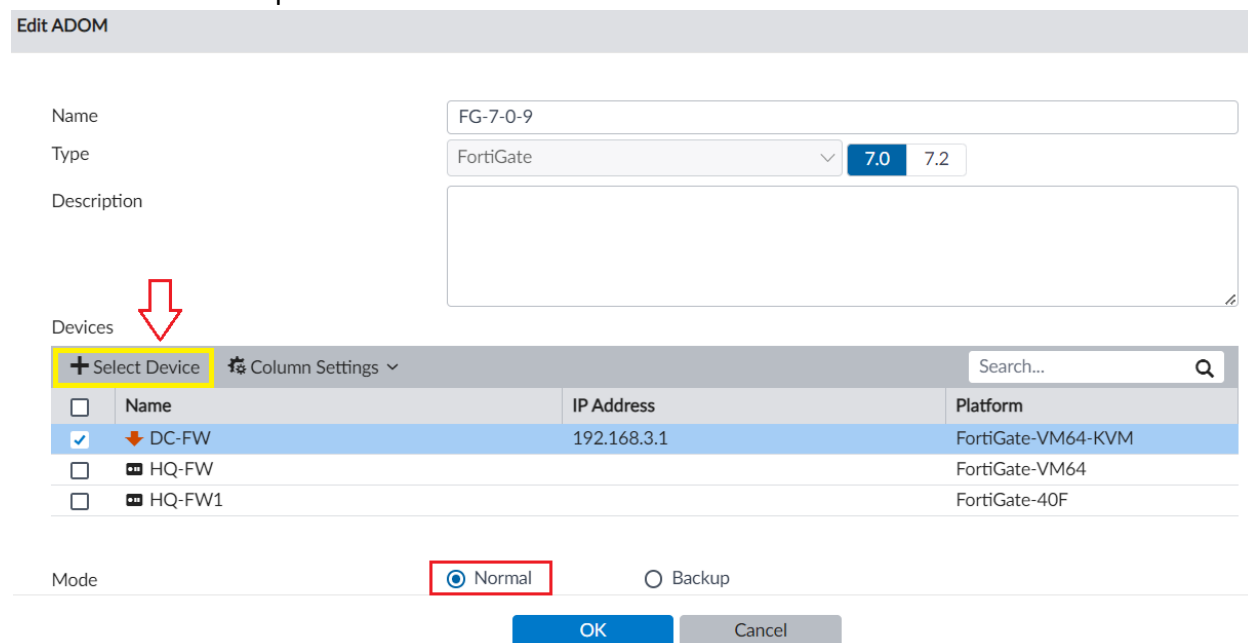
Auto-Push Policy Packages When Device Back Online: ☐ Enable ☒ Disable

OK Cancel

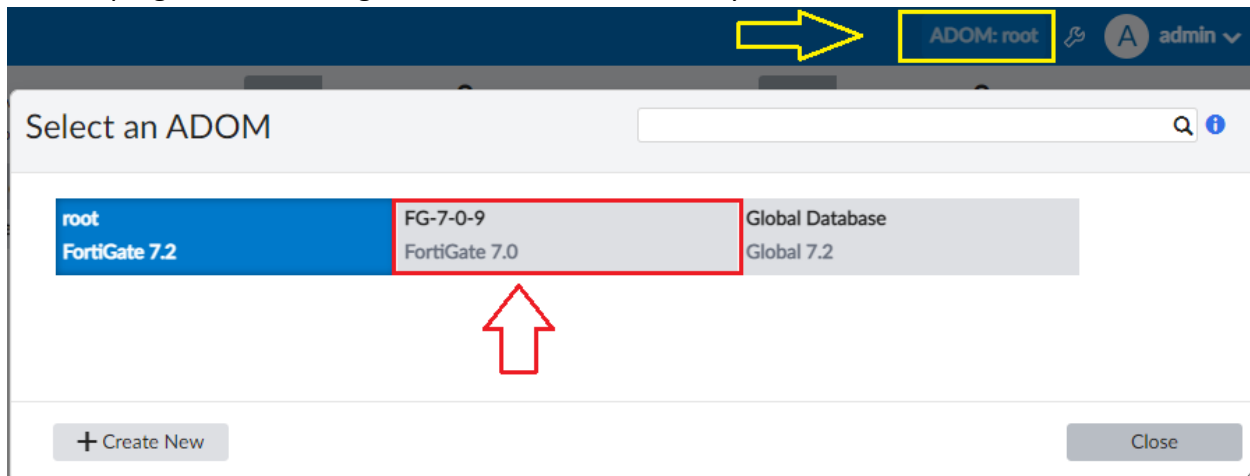
From top right corner change the root ADOM to recently created **ADOM FG-7-0-9**



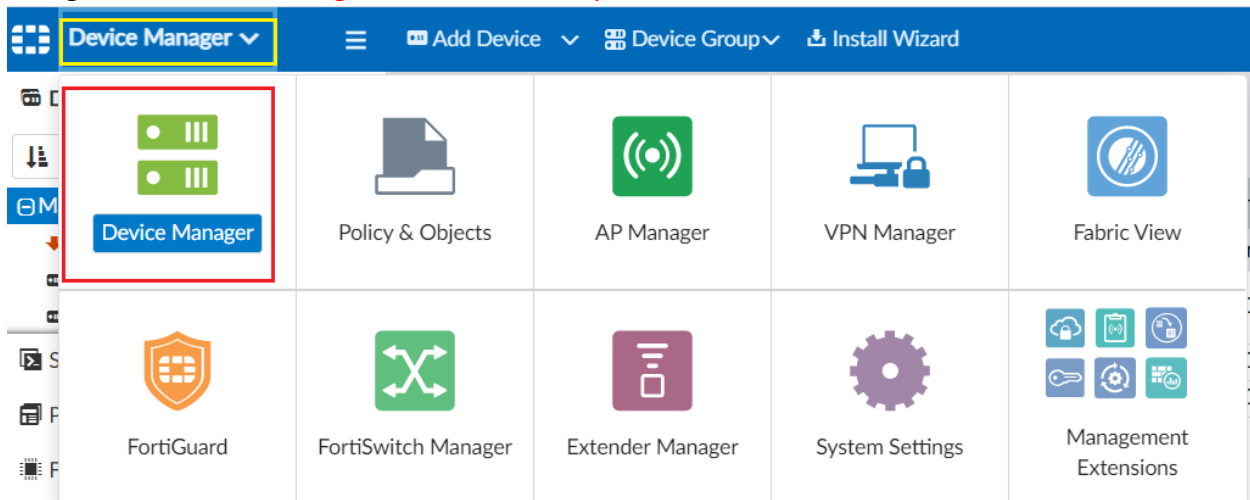
Go to **System Settings > All ADOMs**. Double-click on an ADOM, right-click on an ADOM and then select the **Edit** from the menu, or select the ADOM then click **Edit** in the toolbar. The Edit ADOM pane opens. Click **Select Device**. The Select Device list opens on the right side of the screen. Select the devices that you want to add to the ADOM. Only devices with the same version as the ADOM can be added. The selected devices are displayed in the Devices list. When done selecting devices, click **Close** to close the Select Device list. Click **OK**. The selected devices are removed from their previous ADOM and added to this one.



From top right corner change the root ADOM to recently created **ADOM FG-7-0-9**



Navigate to **Device Manager > Device & Groups**, and click **Add Device**.



Follow **Add Device** wizard, to add a new device to recently created normal ADOM **FG-7-0-9**

